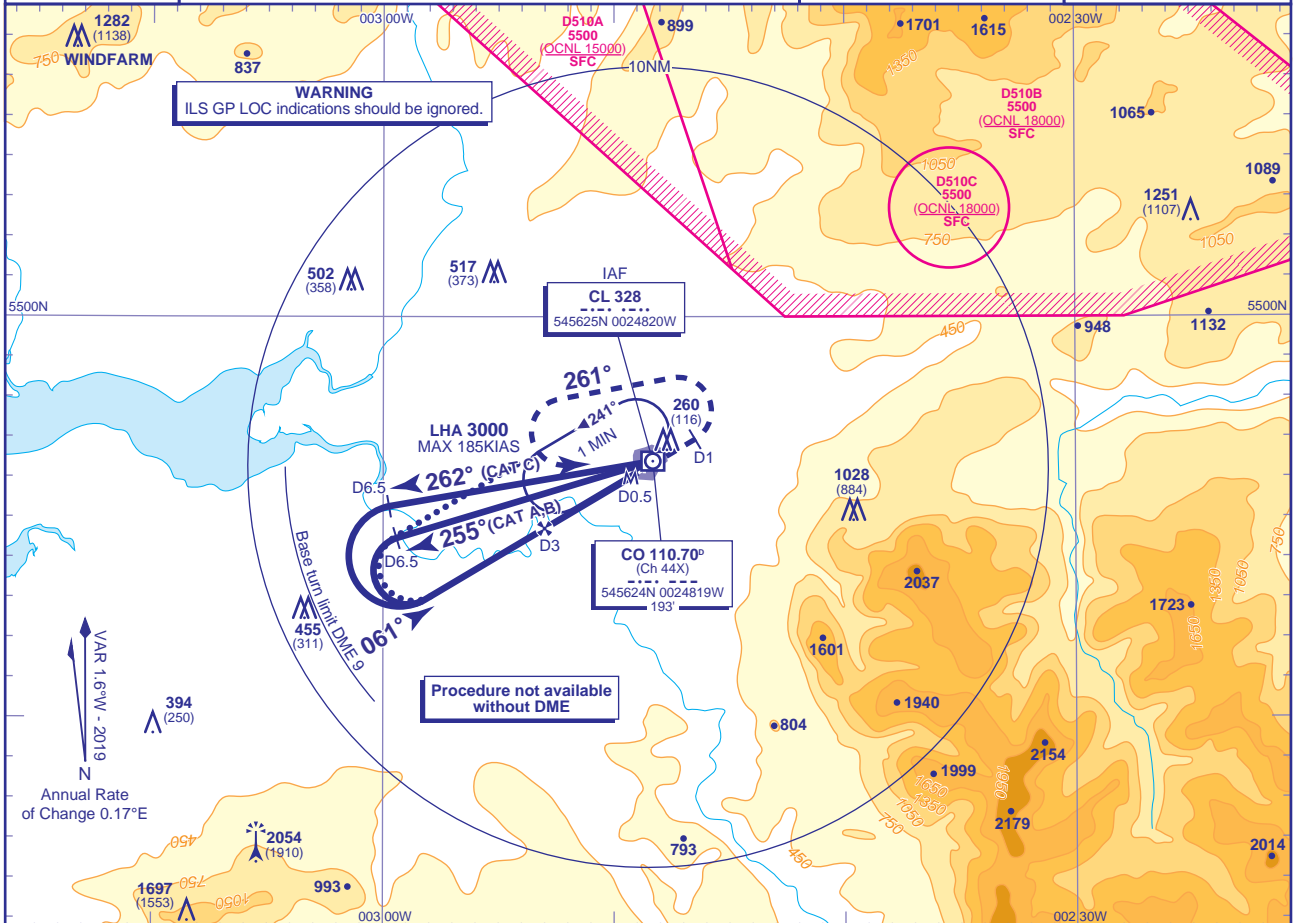


# INSTRUMENT DEPARTURE CHART - ICAO

**CARLISLE**  
**NDB(L)/DME**  
**RWY 06**  
 (ACFT CAT A,B,C)



APP	123.600	CARLISLE APPROACH	AD ELEVATION	190
TWR	123.600	CARLISLE TOWER	THR ELEVATION	144
ATIS	118.425	CARLISLE INFORMATION	OBSTACLE ELEVATION	2054 AMSL (1910) (ABOVE THR)
			BEARINGS ARE MAGNETIC	TRANSITION ALTITUDE
				3000



**WARNING**  
 ILS GP LOC indications should be ignored.

IAF  
**CL 328**  
 545625N 0024820W

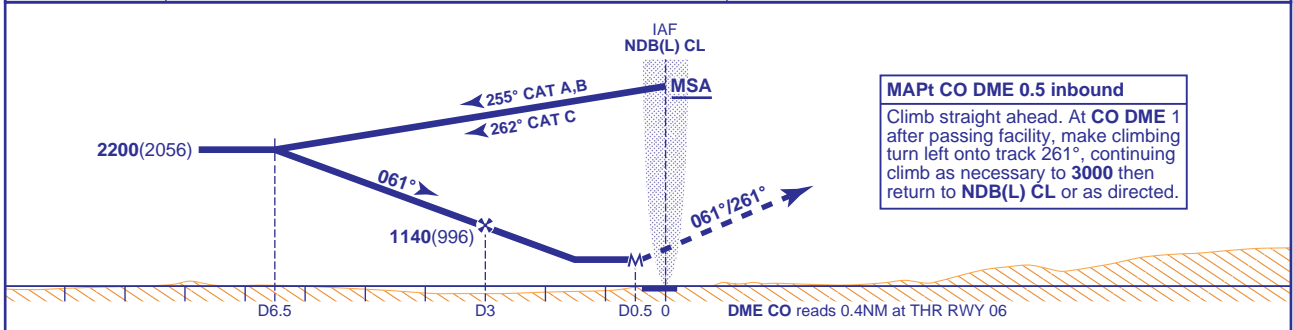
CO 110.70°  
 (Ch 44X)  
 545624N 0024819W  
 193'

Procedure not available  
 without DME

VAR 1.6°W - 2019  
 Annual Rate of Change 0.17°E

**RECOMMENDED PROFILE** Gradient 5.7%, 350FT/NM

DME CO	3	2
ALT(HGT)	1140(996)	800(656)



**MAPt CO DME 0.5 inbound**  
 Climb straight ahead. At CO DME 1 after passing facility, make climbing turn left onto track 261°, continuing climb as necessary to 3000 then return to NDB(L) CL or as directed.

Aircraft Category		A	B	C	Rate of descent	G/S KT	160	140	120	100	80
OCA (OCH)	Procedure	544(400)	644(500)	744(600)		FT/MIN	930	820	700	580	470
VM(C)OCA (OCH AAL)	Total Area	700(510)	900(710)	1100(910)							
	North of RWY 06/24	700(510)	900(710)	1000(810)							

**ALTERNATIVE PROCEDURE EXTENDED HOLDING PATTERN (MAX 185 KIAS)**  
 From the holding pattern, overhead NDB(L) CL turn outbound and fly extended outbound leg descending to 2200. At CO DME 6.5 turn left inbound, then continue as for main procedure.

**NOTE 1** Subject to ATC approval, aircraft may descend to **not below 3200** after passing CO DME 10 inbound to NDB(L) CL.  
**2** Lowest altitude to commence procedure from hold is 3000.

**CHANGE (11/18):** MAG VAR. MAG TRACKS. THR ELEVATION. RWY DESIGNATORS. PROFILE CORRECTED. OBSTACLES. D510 COMPLEX AMENDED.