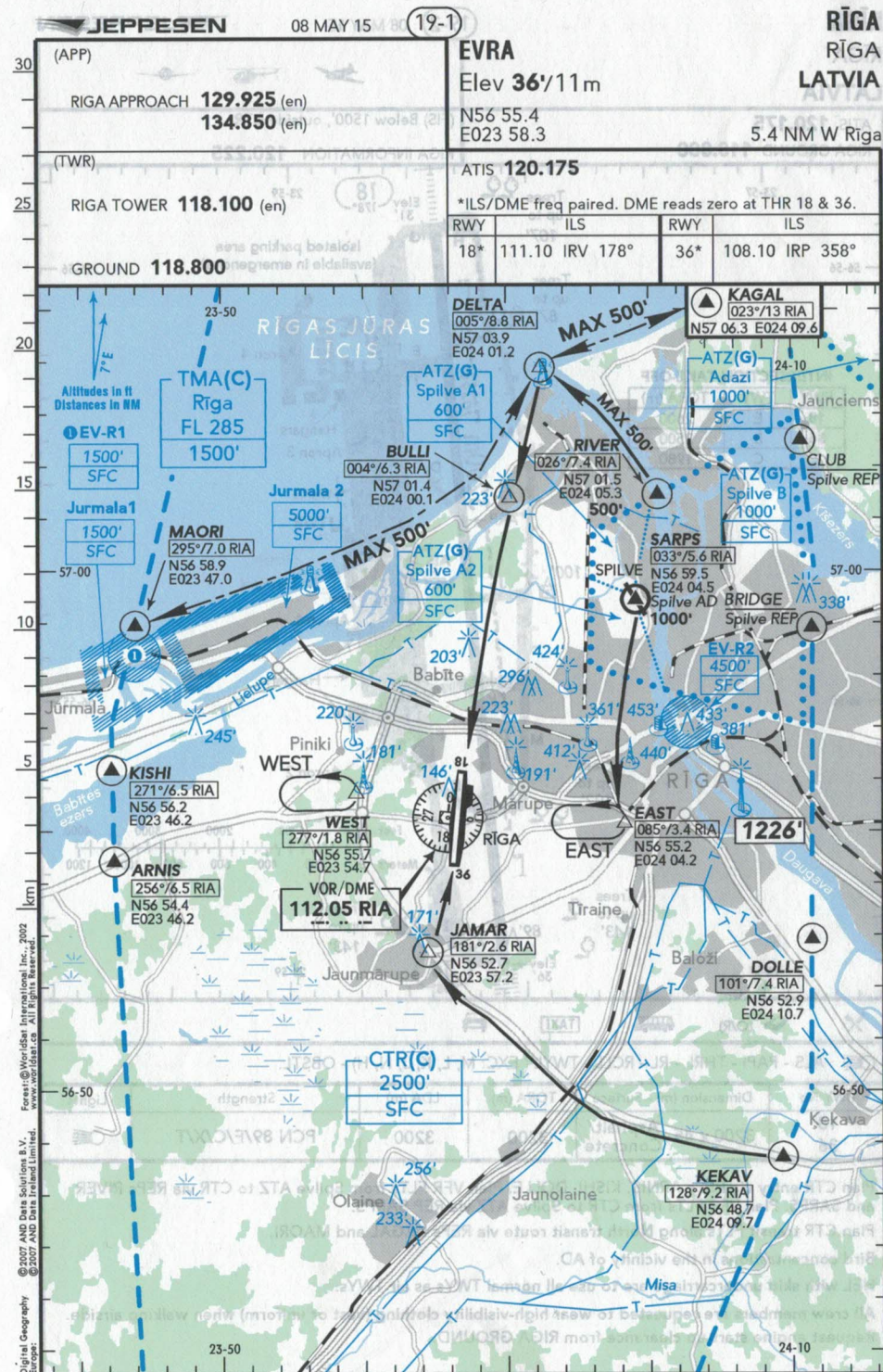




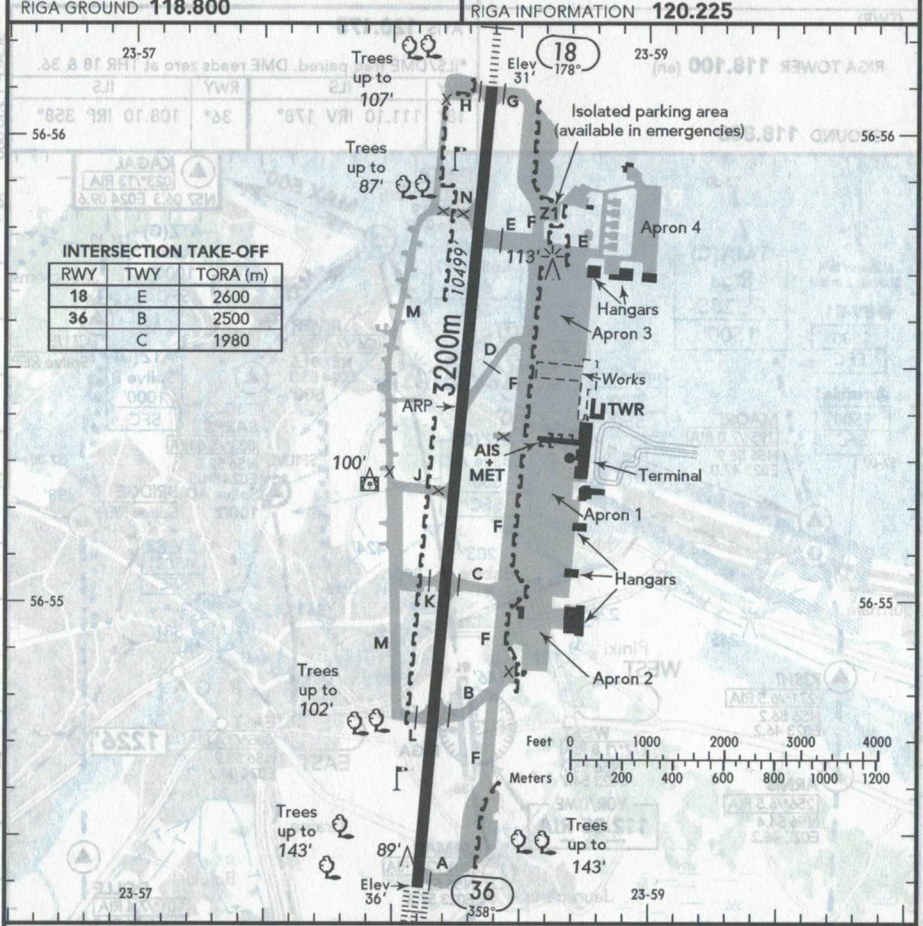
CHANGES: COM - ILS - Airspace - REPS - OBST.

© JEPPESEN, 2007, 2012. ALL RIGHTS RESERVED.



CHANGES: COM - ILS - Airspace - REPS - OBST.

© JEPPESEN, 2007, 2015. ALL RIGHTS RESERVED.

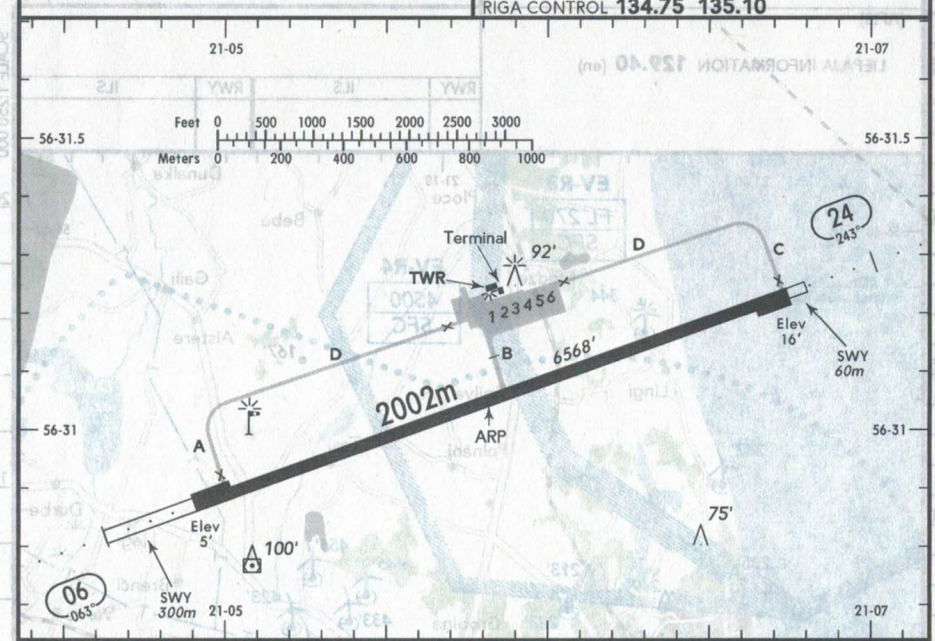


✕ (O/R) TAXI

ALS - PAPI - THRL - RL - RCLL - TWYL (EXC: M, L, K, J, N, H) - OBSTL.

RWY No	Dimension (m) - Surface	TORA (m)	LDA (m)	Strength	Lights
18	3200 x 45 Asphalt/Concrete	3200	3200	PCN 89/F/C/X/T	☉
36					

Plan CTR entry via REPs ARNIS, KISHI, DOLLE. Plan VFR FLTs from Spilve ATZ to CTR via REPs RIVER and SARPS. Plan VFR FLTs from CTR to Spilve ATZ via REP SARPS.
Plan CTR transit FLTs along North transit route via REPs KAGAL and MAORI.
Bird concentrations in the vicinity of AD.
HEL with skid undercarriage are to use all normal TWYs as air TWYs.
All crew members are requested to wear high-visibility clothing (vest or uniform) when walking airside.
Request engine start-up clearance from RIGA GROUND.



✕ 1 (limited) TAXI

ALS - THRL - RL - TWYL - WDI - OBSTL.

RWY No	Dimension (m) - Surface	TORA (m)	LDA (m)	Strength	Lights
06	2002 x 40 Asphalt/Concrete	2002	2002	PCN 26/F/B/W/T	☉
24					

RL turned on 20 MIN before ETA agreed with a pilot beforehand and 10 MIN before ETD.
Lights are turned off 15 MIN after DEP and after LDG when ACFT is on the apron.
Before NVFR flights are commenced ETA and ETD should be arranged with Liepaja AD officer. If more than 15 MIN delay is expected from ETD, that was initially agreed with a pilot, Liepaja AD officer should be informed by TEL 29459555.
If no amendment to the originally agreed ETA has been given to Liepaja AD officer, RL is turned off 20 MIN after originally agreed ETA elapses.
When ATS is not available adjustment of intensity of RL is not provided. RL intensity is fixed and established taking into account dazzling effect on pilot during LDG/TKOF.